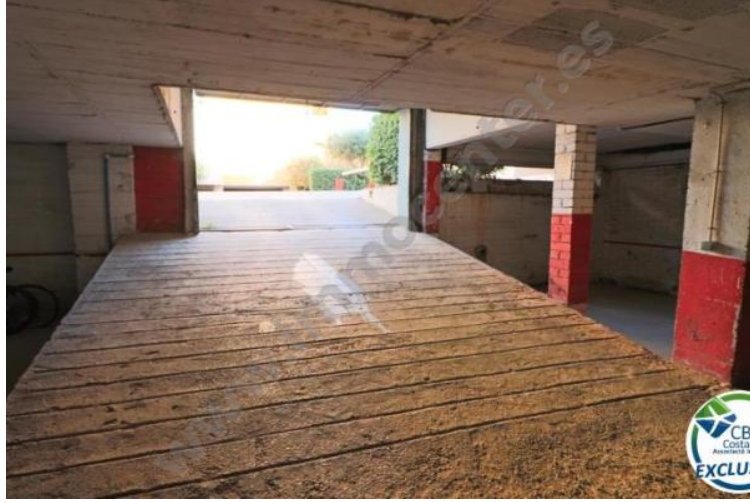


CBR4906
Empuriabrava
25000 EUR

 19 m²


1

A parking space is sold in the building of the Gran Reserva complex 50 meters from the beach. It is a parking space in the basement of the building, in a guarded and closed area. It is easy to access, with an electric door to the basement and a gentle ramp. The parking space is outlined on the ground and consists of approximately 19 square meters.

Good condition

Rooms: